

# Wire & Rod Auto-Rotating

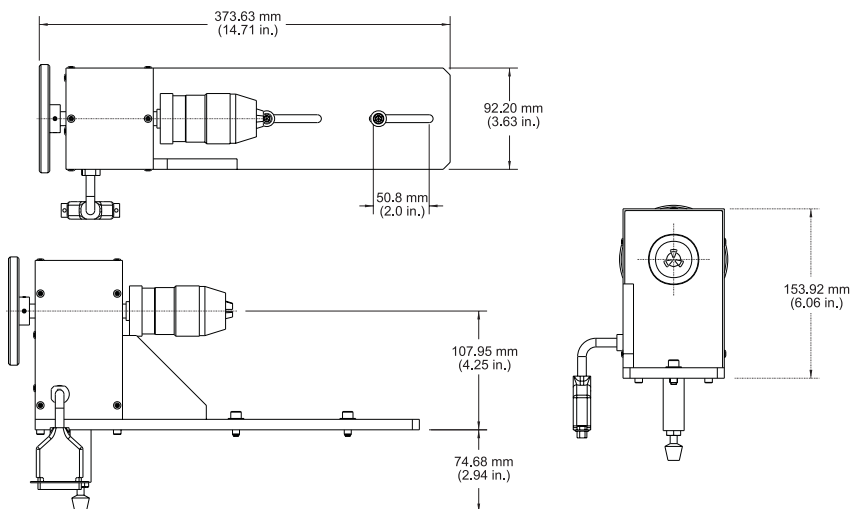
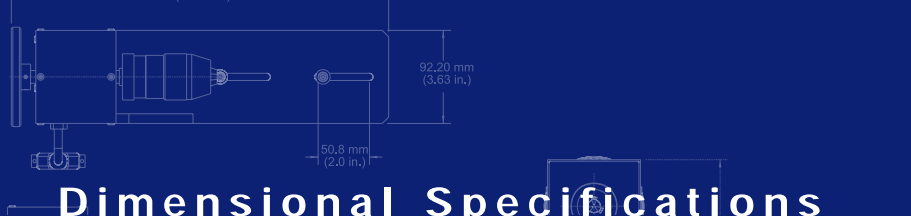
## Chuck <sup>12.7 mm (0.5 in.)</sup>

### F i x t u r e

This fixture enables the automatic measurement of diameter variation.



- Diameter Range: 0.76 - 12.7 mm (0.030 - 0.500 in.)
- Keyless precision ground and hardened drill chuck with J6 taper
- Typical Runout: 0.127 mm (0.005 in.) at chuck face
- Step angle rotation programmable in 1° increments
- Angular positioning error between positions is within 0.5° in the half step mode
- Intelligent fixture identification and setup via I<sup>2</sup>C bus interface
- Plugs into the fixture port on 283 BenchMike
- Captures maximum, minimum, average, difference values, which may be printed or sent to a computer via an RS232 interface
- Optional on-screen circular and X-Y graphical data displays are available showing the angular location of the maximum and minimum values
- Fixed Increment Rotation Mode: User-defined number of positions to be measured. Increments can be entered in number of positions, or angular increment between measured positions. No measurement occurs during rotation.
- Continuous Rotation Mode: Measurement occurs during rotation. User-defined speed of rotation in R.P.M., and the total number of revolutions. Useful for capturing X and Y dimensions on small rectangular parts.



## Beta LaserMike Corporate Offices

### USA

8001 Technology Blvd.  
Dayton, OH 45424  
USA  
Ph: +1 937 233 9935  
Fax: +1 937 233 7284

### Europe

Stirling Road  
Cressex Business Park  
High Wycombe,  
Bucks HP12 3RT  
Ph: +44 1494 89 44 00  
Fax: +44 1494 89 44 01

### Asia

2nd Floor Hankook  
Tire Building  
344 Kwangjang-Dong,  
Kwangjin-Ku  
Seoul 143-210 Korea  
Ph: +82 2 444 9296  
Fax: +82 2 444 9297

[www.betalasermike.com](http://www.betalasermike.com)

# BETA LaserMike